



UNDER PRESSURE TO REDUCE COSTS?...

A 'Pay as you go' service enables you to manage your CAD operations more effectively. Reduce costs, improve response times and increase productivity!..... Take a look at the benefits of outsourcing your drawings to CAD SERVICES

- CAD DRAFTING
- DESIGN MARK-UP TO CAD CONVERSION
- 2D AND 3D BUILDING SERVICES CO-ORDINATION
- AS INSTALLED AND RECORD DRAWINGS
- RECORD DRAWING VERIFICATION SURVEYS
- BUILDING SERVICES SURVEYING
- MEASURED BUILDING SURVEYS
- HOSTED DRAWING SERVICES
- 3D MODELLING AND VISUALISATION

CAD SERVICES provide Computer aided design and drafting services to Architects, Building Services Consultants and Mechanical and Electrical Contractors engaged in the UK Building Services Construction sectors. Combine that with our own 'BIW Online Web Portal' and you have the perfect combination.... Efficient and cost effective CAD support and your drawings available from any internet access point.

CAD SERVICES leads the field in outsourced CAD support and has vast experience of converting a wide range of design mark up and source files, of variable quality and style, to produce a consistent end product - time and time again.

TOO MUCH OR NOT ENOUGH?

Managing your in-house CAD commitments brings a number of challenges, not least matching the available capacity to the workload. During busy periods you are rushed off your feet, possibly to the detriment of the service you provide to customers. During quieter periods, there is a danger that your CAD resources could be actually costing you money!

SO WHAT ARE YOUR OPTIONS?

- Employing or letting go of staff at short notice.
- Using agency staff to supplement in-house resources during peak workflow.
- Or Teaming up with CAD SERVICES to provide tailored solutions whenever you need them.

With CAD SERVICES the resources you need are always at your service - and you only pay for what you use!

THE IN-HOUSE APPROACH

Realistically its not as easy to recruit and dispose of CAD resources as quickly as you may need to. Finding the right calibre staff and then getting them familiar with office practices takes time and money. Its more likely that a strategy is adopted of employing core staff and recruit only for peak requirements. The downside of this is redundant resources when demand drops. And by the the time you recruit again, the demand or deadline may have passed.

THE FLEXIBLE ALTERNATIVE

Using CAD SERVICES its now possible to meet the demand. A pay as you use service matched to the demands of the workload. No investments or redundant resources, no time delays, management resources or risks but with all the benefits - and meeting all the primary objectives such as consistency, accuracy, quality and budgets. Not to mention meeting deadlines!

Just some of the benefits you can enjoy by working with a flexible CAD partner:

- Smoothing out the workload peaks and troughs in your CAD department.
- Consistent style, accuracy and quality of your CAD drawings.
- A flexible approach that fits your business processes.
- Services as and when you need them, every day or just now and then.
- Your completed drawings available online from any internet connection.
- Significant time and cost savings.
- You only pay for what you use.

IT COULDN'T BE SIMPLER - OR MORE COST-EFFECTIVE!

Document
Management by:

BIW 
technologies

- CAD DRAFTING
- DESIGN MARK-UP TO CAD CONVERSION
- 2D AND 3D BUILDING SERVICES CO-ORDINATION
- AS INSTALLED AND RECORD DRAWINGS
- RECORD DRAWING VERIFICATION SURVEYS
- BUILDING SERVICES SURVEYING
- MEASURED BUILDING SURVEYS
- HOSTED DRAWING SERVICES
- 3D MODELLING AND VISUALISATION

Document
Management by:

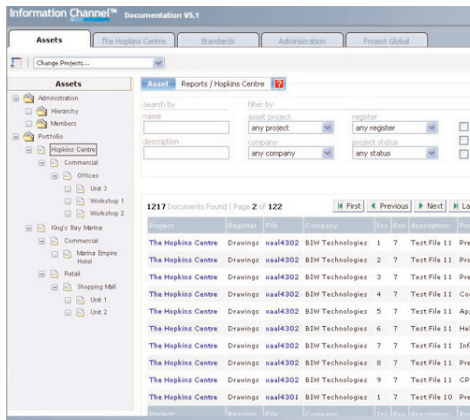


OUR SERVICES INCLUDE

- Conversion of designs or mark-ups to CAD
- 2D and 3D Building services co-ordination.
- 'As installed' and record drawings including site surveys for verification of existing services.
- Site surveys to CIS standards for the creation or checking of building parameters.
- Architectural visualizations.
- Multi issue, multi copy, multi site, 24 hour digital printing and drawing distribution
- Secure data centre file storage, drawing and document management and archiving.
- A comprehensive scanning and plotting service.
- Encapsulation of drawings for maintenance or O&M requirements.

DRAWING AVAILABILITY

In addition to the benefits of a flexible and cost effective CAD resource, your drawings will be available whenever you need them.



Using our secure 'BIW Collaboration web portal' means your drawings and mark-ups are available exclusively to you and your designated team members wherever you have access to the internet. Create and share information with your project team via the internet anywhere, anytime

- Secure, simple-to-use, web-based service, available 24/7
- improves efficiency, communication and quality
- Online access to drawings and documents anywhere, anytime
- Powerful search engine
- High reliability and resilience

CONSIDER THE COSTS

An in-house CAD resource has inherent limitations, dictated by the space available and the number of workstations it can accommodate. As a result coping with seasonal trends, peaks and troughs in the economy and demanding programmes can be a nightmare.

To increase resources you can hire more permanent operators and hope the work keeps coming in, or you could bring in agency staff. Both solutions have cost implications:

- Recruitment or agency fees.
- Management time used in interviewing.
- Training staff in your working practices.
- Cost of additional hardware and software.
- Salary and related employment costs.
- Reduced customer service during the recruitment process.

To decrease resources when there is less work you could make staff redundant or reduce agency staff. Again, there are both direct and indirect costs to your business:

- Redundancy payments.
- Notice period to agency.
- Administration time.
- Unused workstations.
- Risk of not being able to cope with a sudden influx of work.

When you partner with CAD SERVICES the situation is much simpler:

Simply prepare your design mark-ups in the same way you would for an in-house CAD resource.....and send them to us.

And after you've decreased your existing resources there's no need to re-employ. We can be as flexible as your requirements need to be.

GET IN TOUCH

To find out how we can help, call us on -
01268 242800

e-mail us at

post@cadservices.com

Or find us on the web at

www.cadservices.com

CAD SERVICES is an ISO9001 Registered company

